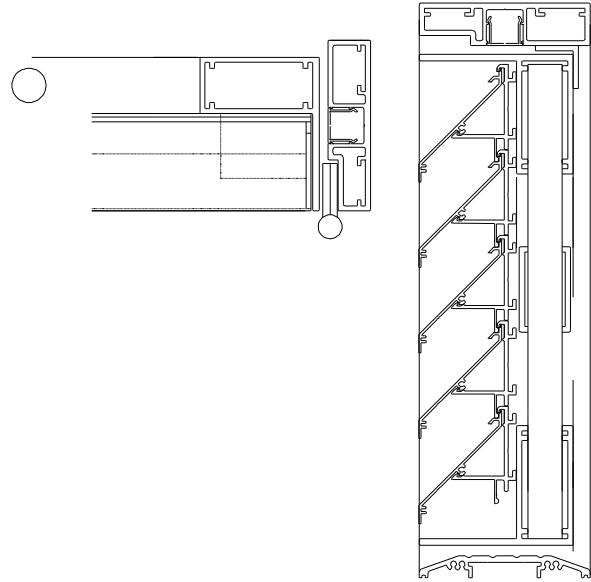


# IKON



## IKL50 Security hinged door



### Product description

Single or double hinged doors of fully welded construction

20mm diameter steel security bars

Adams Rite 2600-40 Sentinel high security lock with 29mm bar bolt with anti snap eurocylinder and armoured strike

Slave leaf fitted with Adams Rite 7201s flushbolts

Full height continuous security hinge

Can be integrated into facades

Visual free area 68%. Physical free area 36.2%

(approximate free area subject to mid-rail sizes)

Standard RAL or BS colours. Anodizing to special order.

Bird mesh as standard

Single skin, or double skin insulated blanking panels can be fitted

Tested to PAS 24:2012—Enhanced security performance requirements for door assemblies.

The Metropolitan Police Secure By Design Officer has commented as follows \* *A robust door locking facility is recommended for secure refuse areas. Bin stores in this area are vulnerable to rough sleeping, anti-social behaviour and drug misuse. Therefore robust security, management and maintenance of the store is necessary.*

Unit 1-3 Yardley Brook Industrial Park, Leaford Way, Shard End, Birmingham, B33 9TX

Tel: 0121 789 9936, Fax 0121 783 7905, Web : [www.ikonaluminium.co.uk](http://www.ikonaluminium.co.uk), Sales : [info@ikonaluminium.co.uk](mailto:info@ikonaluminium.co.uk)